

LABH

LIKE A BOSSANOVA HOME



WARDROBE ACCESSORIES

em couro



ABOUT

At Like A Bossanova Home, we specialize in architecturally curated interior finishing materials and accessories, carefully selected to elevate and distinguish your space. For decades, we've perfected a meticulous approach to source high-quality materials and exceptional craftsmanship. Each item reflects our commitment to using the finest manufacturers who embrace modern technologies, eco-friendly materials, and sustainable practices.

Our mission is simple: to help you create a home that inspires joy, pride, and awe. We believe your space should be a true reflection of your personal style — unique, unapologetic, and authentically you. That's why we offer a collection of thoughtfully sourced product lines designed to celebrate individuality

BEAUTIFUL & FUNCTIONAL

Founded in 1980, Like A Bossanova Home has over 35 years of history in providing premium home decor to both trade professionals and private clients. From our origins as a family-owned business, we have grown into a trusted leader in design-driven interiors, with a team united by a passion for beautiful, intentional living.

Our dedicated customer service team is here to assist you every step of the way. Whether by email, chat, phone, or online contact form, our knowledgeable and friendly staff are ready to help you make your vision a reality.

L A B H

LIKE A BOSSANOVA HOME



ENVIRONMENTALLY RESPONSIBLE LUXURY

em couro means “in leather” in Portuguese

Our *em couro* line makes beautiful use of high-quality eco-leather, a sustainable, environmentally friendly answer to traditional animal leather. In addition to being more durable and easier to maintain than traditional leather, eco-leather is luxuriously soft and comes in many stylish colors and textures.

Our leather is SGS-certified, which means the leather has undergone rigorous testing to meet specific international standards of quality, safety, and environmental compliance. *Learn more on page 50.*

LABH

LIKE A BOSSANOVA HOME

PAGE **01** PULL OUTS 1 SERIES

PAGE **07** PULL OUTS 2 SERIES

PAGE **11** PULL OUTS 3 SERIES

PAGE **15** PULL OUTS 4 SERIES

PAGE **21** PULL OUTS 5 SERIES

PAGE **23** PULL OUTS 6 SERIES

PAGE **25** DROP IN TRAYS

PAGE **33** WATCH WINDERS & SPECIALTY STORAGE

PAGE **38** HANGERS & HANGING SOLUTIONS

PAGE **43** LEATHER PADS

PAGE **45** DRAWER FRONTS & DOOR PANELS

PAGE **47** COLOR CARDS



em couro

PULL OUTS 1 SERIES

The 1 Series frame is made up of an aluminum profile with leather wrapped panel applied to the front of the frame.

Hettich slides included.



PULL OUTS 1 SERIES FRAME

Item No.	Size (mm)	Size (in)
TL-1-06	W 564mm x D 492mm x H 106mm	W 22.205" x D 19.370" x H 4.173"
TL-1-07	W 664mm x D 492mm x H 106mm	W 26.142" x D 19.370" x H 4.173"
TL-1-08	W 764mm x D 492mm x H 106mm	W 30.079" x D 19.370" x H 4.173"
TL-1-09	W 864mm x D 492mm x H 106mm	W 34.016" x D 19.370" x H 4.173"
TL-1-10	W 964mm x D 492mm x H 106mm	W 37.953" x D 19.370" x H 4.173"



LIT GLASS SHELF IS

Pull-out lit glass shelf with 1 Series aluminum frame.
Material: Aluminum alloy and glass.

Item No.	Size (mm)	Size (in)
TL-2-06	W 564mm × D 492mm × H 36mm	W 22.205" × D 19.370" × H 1.417"
TL-2-07	W 664mm × D 492mm × H 36mm	W 26.142" × D 19.370" × H 1.417"
TL-2-08	W 764mm × D 492mm × H 36mm	W 30.079" × D 19.370" × H 1.417"
TL-2-09	W 864mm × D 492mm × H 36mm	W 34.016" × D 19.370" × H 1.417"
TL-2-10	W 964mm × D 492mm × H 36mm	W 37.953" × D 19.370" × H 1.417"



LIT LEATHER SHELF IS

LED strip in leather shelf with 1 Series frame.
Material: Aluminum alloy and leather.

Item No.	Size (mm)	Size (in)
TL-3-06	W 564mm × D 492mm × H 36mm	W 22.205" × D 19.370" × H 1.417"
TL-3-07	W 664mm × D 492mm × H 36mm	W 26.142" × D 19.370" × H 1.417"
TL-3-08	W 764mm × D 492mm × H 36mm	W 30.079" × D 19.370" × H 1.417"
TL-3-09	W 864mm × D 492mm × H 36mm	W 34.016" × D 19.370" × H 1.417"
TL-3-10	W 964mm × D 492mm × H 36mm	W 37.953" × D 19.370" × H 1.417"



PULL OUT WINE RACK IS

Pull-out wine rack in leather with 1 Series frame.
Material: Aluminum alloy and leather.

Item No.	Size (mm)	Size (in)
TL-4-06	W 564mm × D 492mm × H 36mm	W 22.205" × D 19.370" × H 1.417"
TL-4-07	W 664mm × D 492mm × H 36mm	W 26.142" × D 19.370" × H 1.417"
TL-4-08	W 764mm × D 492mm × H 36mm	W 30.079" × D 19.370" × H 1.417"
TL-4-09	W 864mm × D 492mm × H 36mm	W 34.016" × D 19.370" × H 1.417"
TL-4-10	W 964mm × D 492mm × H 36mm	W 37.953" × D 19.370" × H 1.417"



LEATHER OPEN DRAWER IS

Leather lined drawers bottom and sides with 1 Series frame.
Material: Aluminum alloy and leather.

Item No.	Size (mm)	Size (in)
TL-6-06	W 564mm × D 492mm × H 106mm	W 22.205" × D 19.370" × H 4.173"
TL-6-07	W 664mm × D 492mm × H 106mm	W 26.142" × D 19.370" × H 4.173"
TL-6-08	W 764mm × D 492mm × H 106mm	W 30.079" × D 19.370" × H 4.173"
TL-6-09	W 864mm × D 492mm × H 106mm	W 34.016" × D 19.370" × H 4.173"
TL-6-10	W 964mm × D 492mm × H 106mm	W 37.953" × D 19.370" × H 4.173"



LEATHER JEWELRY IS MODEL C

Leather lined jewelry drawer model C with 1 Series frame.
Material: Aluminum alloy and leather.

Item No.	Size (mm)	Size (in)
TL-7-06	W 564mm × D 492mm × H 106mm	W 22.205" × D 19.370" × H 4.173"
TL-7-07	W 664mm × D 492mm × H 106mm	W 26.142" × D 19.370" × H 4.173"
TL-7-08	W 764mm × D 492mm × H 106mm	W 30.079" × D 19.370" × H 4.173"
TL-7-09	W 864mm × D 492mm × H 106mm	W 34.016" × D 19.370" × H 4.173"
TL-7-10	W 964mm × D 492mm × H 106mm	W 37.953" × D 19.370" × H 4.173"



LEATHER PANT RACK IS

Moveable rods leather pull out pant rack with 1 Series frame.
Material: Aluminum alloy and leather.

Item No.	Size (mm)	Size (in)
TL-8-06	W 564mm × D 492mm × H 106mm	W 22.205" × D 19.370" × H 4.173"
TL-8-07	W 664mm × D 492mm × H 106mm	W 26.142" × D 19.370" × H 4.173"
TL-8-08	W 764mm × D 492mm × H 106mm	W 30.079" × D 19.370" × H 4.173"
TL-8-09	W 864mm × D 492mm × H 106mm	W 34.016" × D 19.370" × H 4.173"
TL-8-10	W 964mm × D 492mm × H 106mm	W 37.953" × D 19.370" × H 4.173"



LEATHER GRID IS 2R

Grid divided tray with 2 rows for accessories with 1 Series frame.
Material: Aluminum alloy and leather.

Item No.	Size (mm)	Size (in)
TL-9-06	W 564mm × D 492mm × H 106mm	W 22.205" × D 19.370" × H 4.173"
TL-9-07	W 664mm × D 492mm × H 106mm	W 26.142" × D 19.370" × H 4.173"
TL-9-08	W 764mm × D 492mm × H 106mm	W 30.079" × D 19.370" × H 4.173"
TL-9-09	W 864mm × D 492mm × H 106mm	W 34.016" × D 19.370" × H 4.173"
TL-9-10	W 964mm × D 492mm × H 106mm	W 37.953" × D 19.370" × H 4.173"



LEATHER GRID IS 3R

Grid divided tray with 3 rows for accessories with 1 Series frame.
Material: Aluminum alloy and leather.

Item No.	Size (mm)	Size (in)
TL-10-06	W 564mm × D 492mm × H 106mm	W 22.205" × D 19.370" × H 4.173"
TL-10-07	W 664mm × D 492mm × H 106mm	W 26.142" × D 19.370" × H 4.173"
TL-10-08	W 764mm × D 492mm × H 106mm	W 30.079" × D 19.370" × H 4.173"
TL-10-09	W 864mm × D 492mm × H 106mm	W 34.016" × D 19.370" × H 4.173"
TL-10-10	W 964mm × D 492mm × H 106mm	W 37.953" × D 19.370" × H 4.173"



LEATHER JEWELRY IS MODEL A

Leather lined jewelry drawer model A with 1 Series frame.
Material: Aluminum alloy and leather.

Item No.	Size (mm)	Size (in)
TL-11-06	W 564mm × D 492mm × H 106mm	W 22.205" × D 19.370" × H 4.173"
TL-11-07	W 664mm × D 492mm × H 106mm	W 26.142" × D 19.370" × H 4.173"
TL-11-08	W 764mm × D 492mm × H 106mm	W 30.079" × D 19.370" × H 4.173"
TL-11-09	W 864mm × D 492mm × H 106mm	W 34.016" × D 19.370" × H 4.173"
TL-11-10	W 964mm × D 492mm × H 106mm	W 37.953" × D 19.370" × H 4.173"



LEATHER JEWELRY IS MODEL B

Leather lined jewelry drawer model B with 1 Series frame.
Material: Aluminum alloy and leather.

Item No.	Size (mm)	Size (in)
TL-12-06	W 564mm × D 492mm × H 106mm	W 22.205" × D 19.370" × H 4.173"
TL-12-07	W 664mm × D 492mm × H 106mm	W 26.142" × D 19.370" × H 4.173"
TL-12-08	W 764mm × D 492mm × H 106mm	W 30.079" × D 19.370" × H 4.173"
TL-12-09	W 864mm × D 492mm × H 106mm	W 34.016" × D 19.370" × H 4.173"
TL-12-10	W 964mm × D 492mm × H 106mm	W 37.953" × D 19.370" × H 4.173"



LEATHER BIN IS

Fully lined pull out leather deep leather bin 1 Series frame.
Material: Aluminum alloy and leather.

Item No.	Size (mm)	Size (in)
TL-14-06	W 564mm × D 492mm × H 265mm	W 22.205" × D 19.370" × H 10.433"
TL-14-07	W 664mm × D 492mm × H 265mm	W 26.142" × D 19.370" × H 10.433"
TL-14-08	W 764mm × D 492mm × H 265mm	W 30.079" × D 19.370" × H 10.433"
TL-14-09	W 864mm × D 492mm × H 265mm	W 34.016" × D 19.370" × H 10.433"
TL-14-10	W 964mm × D 492mm × H 265mm	W 37.953" × D 19.370" × H 10.433"



LEATHER UNDERWEAR DRAWER 1S

Leather lined, divided pull out deep underwear drawer with 1 Series frame.
Material: Aluminum alloy and leather.

Item No.	Size (mm)	Size (in)
TL-13-06	W 564mm × D 492mm × H 185mm	W 22.205" × D 19.370" × H 7.283"
TL-13-07	W 664mm × D 492mm × H 185mm	W 26.142" × D 19.370" × H 7.283"
TL-13-08	W 764mm × D 492mm × H 185mm	W 30.079" × D 19.370" × H 7.283"
TL-13-09	W 864mm × D 492mm × H 185mm	W 34.016" × D 19.370" × H 7.283"
TL-13-10	W 964mm × D 492mm × H 185mm	W 37.953" × D 19.370" × H 7.283"



LEATHER JEWELRY 1S MODEL D

Leather lined jewelry drawer model D with 1 Series frame.
Material: Aluminum alloy and leather.

Item No.	Size (mm)	Size (in)
TL-15-06	W 564mm × D 492mm × H 106mm	W 22.205" × D 19.370" × H 4.173"
TL-15-07	W 664mm × D 492mm × H 106mm	W 26.142" × D 19.370" × H 4.173"
TL-15-08	W 764mm × D 492mm × H 106mm	W 30.079" × D 19.370" × H 4.173"
TL-15-09	W 864mm × D 492mm × H 106mm	W 34.016" × D 19.370" × H 4.173"
TL-15-10	W 964mm × D 492mm × H 106mm	W 37.953" × D 19.370" × H 4.173"



GABLE CONNECTORS

Leather wrapped gable connector for a seamless look.
Material: Aluminum alloy and leather.

Item No.	Size
KY-08	Custom Sizes

PANEL LINER

3mm thick leather wrapped panel, with all 4 edges finished.
Material: MDF and leather.

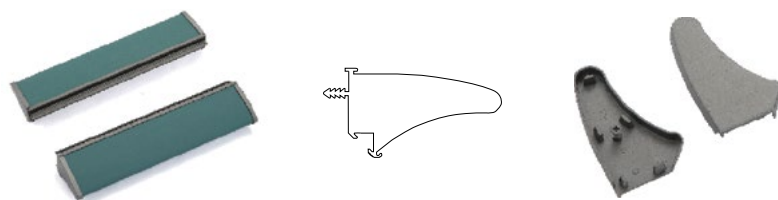
Item No.	Size
KY-1M2M	Custom Sizes



SHELF EDGE

Leather wrapped edge strip.
Material: Aluminum alloy and leather.

Item No.	Size
KY-09	Custom Sizes





em couro

PULL OUTS 2 SERIES

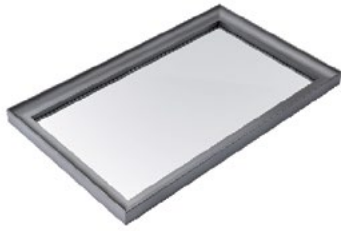
The 2 Series frame is made up of an aluminum profile with all 4 sides showing aluminum only.

Hettich slides included.



PULL OUTS 2 SERIES FRAME

Item No.	Size (mm)	Size (in)
A-1-06	W 564mm×D 492mm×H 50mm	W 22.205"×D 19.370"×H 1.969"
A-1-07	W 664mm×D 492mm×H 50mm	W 26.142"×D 19.370"×H 1.969"
A-1-08	W 764mm×D 492mm×H 50mm	W 30.079"×D 19.370"×H 1.969"
A-1-09	W 864mm×D 492mm×H 50mm	W 34.016"×D 19.370"×H 1.969"
A-1-10	W 964mm×D 492mm×H 50mm	W 37.953"×D 19.370"×H 1.969"



PULL OUT GLASS SHELF 2S

Pull-out glass shelf with 2 Series aluminum frame.
Material: Aluminum alloy and glass.

Item No.	Size (mm)	Size (in)
A-7-06	W 564mm × D 492mm × H 50mm	W 22.205" × D 19.370" × H 1.969"
A-7-07	W 664mm × D 492mm × H 50mm	W 26.142" × D 19.370" × H 1.969"
A-7-08	W 764mm × D 492mm × H 50mm	W 30.079" × D 19.370" × H 1.969"
A-7-09	W 864mm × D 492mm × H 50mm	W 34.016" × D 19.370" × H 1.969"
A-7-10	W 964mm × D 492mm × H 50mm	W 37.953" × D 19.370" × H 1.969"



LEATHER PANT RACK M 2S

Moveable rods leather pull-out pant rack with 2 Series frame.
Material: Aluminum alloy and leather.

Item No.	Size (mm)	Size (in)
A-8-06	W 564mm × D 492mm × H 50mm	W 22.205" × D 19.370" × H 1.969"
A-8-07	W 664mm × D 492mm × H 50mm	W 26.142" × D 19.370" × H 1.969"
A-8-08	W 764mm × D 492mm × H 50mm	W 30.079" × D 19.370" × H 1.969"
A-8-09	W 864mm × D 492mm × H 50mm	W 34.016" × D 19.370" × H 1.969"
A-8-10	W 964mm × D 492mm × H 50mm	W 37.953" × D 19.370" × H 1.969"



LEATHER PANT RACK R 2S

Round rods leather pull-out pant rack with 2 Series frame.
Material: Aluminum alloy and leather.

Item No.	Size (mm)	Size (in)
A-9-06	W 564mm × D 492mm × H 50mm	W 22.205" × D 19.370" × H 1.969"
A-9-07	W 664mm × D 492mm × H 50mm	W 26.142" × D 19.370" × H 1.969"
A-9-08	W 764mm × D 492mm × H 50mm	W 30.079" × D 19.370" × H 1.969"
A-9-09	W 864mm × D 492mm × H 50mm	W 34.016" × D 19.370" × H 1.969"
A-9-10	W 964mm × D 492mm × H 50mm	W 37.953" × D 19.370" × H 1.969"



LEATHER GRID 2S 3R

3 Row Grid divided tray for accessories with 2 Series frame.
Material: Aluminum alloy and leather.

Item No.	Size (mm)	Size (in)
A-10-06	W 564mm × D 492mm × H 50mm	W 22.205" × D 19.370" × H 1.969"
A-10-07	W 664mm × D 492mm × H 50mm	W 26.142" × D 19.370" × H 1.969"
A-10-08	W 764mm × D 492mm × H 50mm	W 30.079" × D 19.370" × H 1.969"
A-10-09	W 864mm × D 492mm × H 50mm	W 34.016" × D 19.370" × H 1.969"
A-10-10	W 964mm × D 492mm × H 50mm	W 37.953" × D 19.370" × H 1.969"



LEATHER HD SHELF 2S

Leather shelf with 2 horizontal dividers in 2 Series frame.
Material: Aluminum alloy and leather.

Item No.	Size (mm)	Size (in)
A-11-06	W 564mm × D 492mm × H 50mm	W 22.205" × D 19.370" × H 1.969"
A-11-07	W 664mm × D 492mm × H 50mm	W 26.142" × D 19.370" × H 1.969"
A-11-08	W 764mm × D 492mm × H 50mm	W 30.079" × D 19.370" × H 1.969"
A-11-09	W 864mm × D 492mm × H 50mm	W 34.016" × D 19.370" × H 1.969"
A-11-10	W 964mm × D 492mm × H 50mm	W 37.953" × D 19.370" × H 1.969"



LEATHER JEWELRY 2S MODEL A

Leather lined jewelry drawer model A with 2 Series frame.
Material: Aluminum alloy and leather.

Item No.	Size (mm)	Size (in)
A-12-06	W 564mm × D 492mm × H 50mm	W 22.205" × D 19.370" × H 1.969"
A-12-07	W 664mm × D 492mm × H 50mm	W 26.142" × D 19.370" × H 1.969"
A-12-08	W 764mm × D 492mm × H 50mm	W 30.079" × D 19.370" × H 1.969"
A-12-09	W 864mm × D 492mm × H 50mm	W 34.016" × D 19.370" × H 1.969"
A-12-10	W 964mm × D 492mm × H 50mm	W 37.953" × D 19.370" × H 1.969"



LEATHER UNDERWEAR DRAWER 2S

Leather lined, divided pull out deep underwear drawer with 2 Series frame.
Material: Aluminum alloy and leather.

Item No.	Size (mm)	Size (in)
A-13-06	W 564mm × D 492mm × H 100mm	W 22.205" × D 19.370" × H 3.937"
A-13-07	W 664mm × D 492mm × H 100mm	W 26.142" × D 19.370" × H 3.937"
A-13-08	W 764mm × D 492mm × H 100mm	W 30.079" × D 19.370" × H 3.937"
A-13-09	W 864mm × D 492mm × H 100mm	W 34.016" × D 19.370" × H 3.937"
A-13-10	W 964mm × D 492mm × H 100mm	W 37.953" × D 19.370" × H 3.937"



LEATHER BIN 2S

Fully lined pull out leather deep leather bin with 2 Series frame.
Material: Aluminum alloy and leather.

Item No.	Size (mm)	Size (in)
A-14-06	W 564mm × D 492mm × H 200mm	W 22.205" × D 19.370" × H 7.874"
A-14-07	W 664mm × D 492mm × H 200mm	W 26.142" × D 19.370" × H 7.874"
A-14-08	W 764mm × D 492mm × H 200mm	W 30.079" × D 19.370" × H 7.874"
A-14-09	W 864mm × D 492mm × H 200mm	W 34.016" × D 19.370" × H 7.874"
A-14-10	W 964mm × D 492mm × H 200mm	W 37.953" × D 19.370" × H 7.874"



LEATHER JEWELRY 2S MODEL B

Leather lined jewelry drawer model B with 2 Series frame.
Material: Aluminum alloy and leather.

Item No.	Size (mm)	Size (in)
A-15-06	W 564mm × D 492mm × H 50mm	W 22.205" × D 19.370" × H 1.969"
A-15-07	W 664mm × D 492mm × H 50mm	W 26.142" × D 19.370" × H 1.969"
A-15-08	W 764mm × D 492mm × H 50mm	W 30.079" × D 19.370" × H 1.969"
A-15-09	W 864mm × D 492mm × H 50mm	W 34.016" × D 19.370" × H 1.969"
A-15-10	W 964mm × D 492mm × H 50mm	W 37.953" × D 19.370" × H 1.969"



LEATHER PULL OUT SHOE 2S

Leather pull out shoes drawer with 2 Series frame.
Material: Aluminum alloy and leather.

Item No.	Size (mm)	Size (in)
A-16-06	W 564mm × D 492mm × H 265mm	W 22.205" × D 19.370" × H 10.433"
A-16-07	W 664mm × D 492mm × H 265mm	W 26.142" × D 19.370" × H 10.433"
A-16-08	W 764mm × D 492mm × H 265mm	W 30.079" × D 19.370" × H 10.433"
A-16-09	W 864mm × D 492mm × H 265mm	W 34.016" × D 19.370" × H 10.433"
A-16-10	W 964mm × D 492mm × H 265mm	W 37.953" × D 19.370" × H 10.433"



LEATHER PULL OUT OPEN SHELF 2S

Leather pull out shelf with 2 Series frame.
Material: Aluminum alloy and leather.

Item No.	Size (mm)	Size (in)
A-19-06	W 564mm × D 492mm × H 50mm	W 22.205" × D 19.370" × H 1.969"
A-19-07	W 664mm × D 492mm × H 50mm	W 26.142" × D 19.370" × H 1.969"
A-19-08	W 764mm × D 492mm × H 50mm	W 30.079" × D 19.370" × H 1.969"
A-19-09	W 864mm × D 492mm × H 50mm	W 34.016" × D 19.370" × H 1.969"
A-19-10	W 964mm × D 492mm × H 50mm	W 37.953" × D 19.370" × H 1.969"



LEATHER JEWELRY 2S MODEL C

Leather lined jewelry drawer model C with 2 Series frame.
Material: Aluminum alloy and leather.

Item No.	Size (mm)	Size (in)
A-20-06	W 564mm × D 492mm × H 50mm	W 22.205" × D 19.370" × H 1.969"
A-20-07	W 664mm × D 492mm × H 50mm	W 26.142" × D 19.370" × H 1.969"
A-20-08	W 764mm × D 492mm × H 50mm	W 30.079" × D 19.370" × H 1.969"
A-20-09	W 864mm × D 492mm × H 50mm	W 34.016" × D 19.370" × H 1.969"
A-20-10	W 964mm × D 492mm × H 50mm	W 37.953" × D 19.370" × H 1.969"



em couro

PULL OUTS 3 SERIES

The 3 Series frame is made up of an aluminum profile with a flat aluminum strip applied to the front of the frame.

Hettich slides included.



PULL OUTS 3 SERIES FRAME

Item No.	Size (mm)	Size (in)
BY-1-06	W 564mm×D 492mm×H 50mm	W 22.205"×D 19.370"×H 1.969"
BY-1-07	W 664mm×D 492mm×H 50mm	W 26.142"×D 19.370"×H 1.969"
BY-1-08	W 764mm×D 492mm×H 50mm	W 30.079"×D 19.370"×H 1.969"
BY-1-09	W 864mm×D 492mm×H 50mm	W 34.016"×D 19.370"×H 1.969"
BY-1-10	W 964mm×D 492mm×H 50mm	W 37.953"×D 19.370"×H 1.969"



PULL OUT GLASS SHELF 3S

Pull-out glass shelf with 3 Series aluminum frame.
Material: Aluminum alloy and glass.

Item No.	Size (mm)	Size (in)
BY-7-06	W 564mm × D 492mm × H 50mm	W 22.205" × D 19.370" × H 1.969"
BY-7-07	W 664mm × D 492mm × H 50mm	W 26.142" × D 19.370" × H 1.969"
BY-7-08	W 764mm × D 492mm × H 50mm	W 30.079" × D 19.370" × H 1.969"
BY-7-09	W 864mm × D 492mm × H 50mm	W 34.016" × D 19.370" × H 1.969"
BY-7-10	W 964mm × D 492mm × H 50mm	W 37.953" × D 19.370" × H 1.969"



LEATHER PANT RACK M 3S

Moveable rods leather pull-out pant rack with 3 Series frame.
Material: Aluminum alloy and leather.

Item No.	Size (mm)	Size (in)
BY-8-06	W 564mm × D 492mm × H 50mm	W 22.205" × D 19.370" × H 1.969"
BY-8-07	W 664mm × D 492mm × H 50mm	W 26.142" × D 19.370" × H 1.969"
BY-8-08	W 764mm × D 492mm × H 50mm	W 30.079" × D 19.370" × H 1.969"
BY-8-09	W 864mm × D 492mm × H 50mm	W 34.016" × D 19.370" × H 1.969"
BY-8-10	W 964mm × D 492mm × H 50mm	W 37.953" × D 19.370" × H 1.969"



LEATHER PANT RACK R 3S

Round rods leather pull-out pant rack with 3 Series frame.
Material: Aluminum alloy and leather.

Item No.	Size (mm)	Size (in)
BY-9-06	W 564mm × D 492mm × H 50mm	W 22.205" × D 19.370" × H 1.969"
BY-9-07	W 664mm × D 492mm × H 50mm	W 26.142" × D 19.370" × H 1.969"
BY-9-08	W 764mm × D 492mm × H 50mm	W 30.079" × D 19.370" × H 1.969"
BY-9-09	W 864mm × D 492mm × H 50mm	W 34.016" × D 19.370" × H 1.969"
BY-9-10	W 964mm × D 492mm × H 50mm	W 37.953" × D 19.370" × H 1.969"



LEATHER GRID 3S 3R

3 Row Grid divided tray for accessories with 3 Series frame.
Material: Aluminum alloy and leather.

Item No.	Size (mm)	Size (in)
BY-10-06	W 564mm × D 492mm × H 50mm	W 22.205" × D 19.370" × H 1.969"
BY-10-07	W 664mm × D 492mm × H 50mm	W 26.142" × D 19.370" × H 1.969"
BY-10-08	W 764mm × D 492mm × H 50mm	W 30.079" × D 19.370" × H 1.969"
BY-10-09	W 864mm × D 492mm × H 50mm	W 34.016" × D 19.370" × H 1.969"
BY-10-10	W 964mm × D 492mm × H 50mm	W 37.953" × D 19.370" × H 1.969"



LEATHER HD SHELF 3S

Leather shelf with 2 horizontal dividers in 3 Series frame.
Material: Aluminum alloy and leather.

Item No.	Size (mm)	Size (in)
BY-11-06	W 564mm × D 492mm × H 50mm	W 22.205" × D 19.370" × H 1.969"
BY-11-07	W 664mm × D 492mm × H 50mm	W 26.142" × D 19.370" × H 1.969"
BY-11-08	W 764mm × D 492mm × H 50mm	W 30.079" × D 19.370" × H 1.969"
BY-11-09	W 864mm × D 492mm × H 50mm	W 34.016" × D 19.370" × H 1.969"
BY-11-10	W 964mm × D 492mm × H 50mm	W 37.953" × D 19.370" × H 1.969"



LEATHER JEWELRY 3S MODEL A

Leather lined jewelry drawer model A with 3 Series frame.
Material: Aluminum alloy and leather.

Item No.	Size (mm)	Size (in)
BY-12-06	W 564mm × D 492mm × H 50mm	W 22.205" × D 19.370" × H 1.969"
BY-12-07	W 664mm × D 492mm × H 50mm	W 26.142" × D 19.370" × H 1.969"
BY-12-08	W 764mm × D 492mm × H 50mm	W 30.079" × D 19.370" × H 1.969"
BY-12-09	W 864mm × D 492mm × H 50mm	W 34.016" × D 19.370" × H 1.969"
BY-12-10	W 964mm × D 492mm × H 50mm	W 37.953" × D 19.370" × H 1.969"



LEATHER UNDERWEAR DRAWER 3S

Leather lined, divided pull out deep underwear drawer with 3 Series frame.
Material: Aluminum alloy and leather.

Item No.	Size (mm)	Size (in)
BY-13-06	W 564mm × D 492mm × H 100mm	W 22.205" × D 19.370" × H 3.937"
BY-13-07	W 664mm × D 492mm × H 100mm	W 26.142" × D 19.370" × H 3.937"
BY-13-08	W 764mm × D 492mm × H 100mm	W 30.079" × D 19.370" × H 3.937"
BY-13-09	W 864mm × D 492mm × H 100mm	W 34.016" × D 19.370" × H 3.937"
BY-13-10	W 964mm × D 492mm × H 100mm	W 37.953" × D 19.370" × H 3.937"



LEATHER BIN 3S

Fully lined pull out leather deep bin with 3 Series frame.
Material: Aluminum alloy and leather.

Item No.	Size (mm)	Size (in)
BY-14-06	W 564mm × D 492mm × H 200mm	W 22.205" × D 19.370" × H 7.874"
BY-14-07	W 664mm × D 492mm × H 200mm	W 26.142" × D 19.370" × H 7.874"
BY-14-08	W 764mm × D 492mm × H 200mm	W 30.079" × D 19.370" × H 7.874"
BY-14-09	W 864mm × D 492mm × H 200mm	W 34.016" × D 19.370" × H 7.874"
BY-14-10	W 964mm × D 492mm × H 200mm	W 37.953" × D 19.370" × H 7.874"



LEATHER JEWELRY 3S MODEL B

Leather lined jewelry drawer model B with 3 Series frame.
Material: Aluminum alloy and leather.

Item No.	Size (mm)	Size (in)
BY-15-06	W 564mm × D 492mm × H 50mm	W 22.205" × D 19.370" × H 1.969"
BY-15-07	W 664mm × D 492mm × H 50mm	W 26.142" × D 19.370" × H 1.969"
BY-15-08	W 764mm × D 492mm × H 50mm	W 30.079" × D 19.370" × H 1.969"
BY-15-09	W 864mm × D 492mm × H 50mm	W 34.016" × D 19.370" × H 1.969"
BY-15-10	W 964mm × D 492mm × H 50mm	W 37.953" × D 19.370" × H 1.969"



LEATHER PULL OUT SHOE 3S

Leather pull out shoes drawer with 3 Series frame.
Material: Aluminum alloy and leather.

Item No.	Size (mm)	Size (in)
BY-16-06	W 564mm × D 492mm × H 265mm	W 22.205" × D 19.370" × H 10.433"
BY-16-07	W 664mm × D 492mm × H 265mm	W 26.142" × D 19.370" × H 10.433"
BY-16-08	W 764mm × D 492mm × H 265mm	W 30.079" × D 19.370" × H 10.433"
BY-16-09	W 864mm × D 492mm × H 265mm	W 34.016" × D 19.370" × H 10.433"
BY-16-10	W 964mm × D 492mm × H 265mm	W 37.953" × D 19.370" × H 10.433"



LEATHER PULL OUT OPEN SHELF 3S

Leather pull out shelf with 3 Series frame.
Material: Aluminum alloy and leather.

Item No.	Size (mm)	Size (in)
BY-19-06	W 564mm × D 492mm × H 50mm	W 22.205" × D 19.370" × H 1.969"
BY-19-07	W 664mm × D 492mm × H 50mm	W 26.142" × D 19.370" × H 1.969"
BY-19-08	W 764mm × D 492mm × H 50mm	W 30.079" × D 19.370" × H 1.969"
BY-19-09	W 864mm × D 492mm × H 50mm	W 34.016" × D 19.370" × H 1.969"
BY-19-10	W 964mm × D 492mm × H 50mm	W 37.953" × D 19.370" × H 1.969"



LEATHER JEWELRY 3S MODEL C

Leather lined jewelry drawer model C with 3 Series frame.
Material: Aluminum alloy and leather.

Item No.	Size (mm)	Size (in)
BY-20-06	W 564mm × D 492mm × H 50mm	W 22.205" × D 19.370" × H 1.969"
BY-20-07	W 664mm × D 492mm × H 50mm	W 26.142" × D 19.370" × H 1.969"
BY-20-08	W 764mm × D 492mm × H 50mm	W 30.079" × D 19.370" × H 1.969"
BY-20-09	W 864mm × D 492mm × H 50mm	W 34.016" × D 19.370" × H 1.969"
BY-20-10	W 964mm × D 492mm × H 50mm	W 37.953" × D 19.370" × H 1.969"



em couro

PULL OUTS 4 SERIES

The 4 Series frame is made up of an aluminum profile with a leather-wrapped flat aluminum strip applied to the front of the frame.

Hettich slides included.



PULL OUTS 4 SERIES FRAME

Item No.	Size (mm)	Size (in)
C-1-06	W 564mm×D 492mm×H 50mm	W 22.205"×D 19.370"×H 1.969"
C-1-07	W 664mm×D 492mm×H 50mm	W 26.142"×D 19.370"×H 1.969"
C-1-08	W 764mm×D 492mm×H 50mm	W 30.079"×D 19.370"×H 1.969"
C-1-09	W 864mm×D 492mm×H 50mm	W 34.016"×D 19.370"×H 1.969"
C-1-10	W 964mm×D 492mm×H 50mm	W 37.953"×D 19.370"×H 1.969"



PULL OUT GLASS SHELF 4S

Pull-out glass shelf with 4 Series aluminum frame.
Material: Aluminum alloy and glass.

Item No.	Size (mm)	Size (in)
C-7-06	W 564mm × D 492mm × H 50mm	W 22.205" × D 19.370" × H 1.969"
C-7-07	W 664mm × D 492mm × H 50mm	W 26.142" × D 19.370" × H 1.969"
C-7-08	W 764mm × D 492mm × H 50mm	W 30.079" × D 19.370" × H 1.969"
C-7-09	W 864mm × D 492mm × H 50mm	W 34.016" × D 19.370" × H 1.969"
C-7-10	W 964mm × D 492mm × H 50mm	W 37.953" × D 19.370" × H 1.969"



LEATHER PANT RACK M 4S

Moveable rods leather pull-out pant rack with 4 Series frame.
Material: Aluminum alloy and leather.

Item No.	Size (mm)	Size (in)
C-8-06	W 564mm × D 492mm × H 50mm	W 22.205" × D 19.370" × H 1.969"
C-8-07	W 664mm × D 492mm × H 50mm	W 26.142" × D 19.370" × H 1.969"
C-8-08	W 764mm × D 492mm × H 50mm	W 30.079" × D 19.370" × H 1.969"
C-8-09	W 864mm × D 492mm × H 50mm	W 34.016" × D 19.370" × H 1.969"
C-8-10	W 964mm × D 492mm × H 50mm	W 37.953" × D 19.370" × H 1.969"



LEATHER PANT RACK R 4S

Round rods leather pull-out pant rack with 4 Series frame.
Material: Aluminum alloy and leather.

Item No.	Size (mm)	Size (in)
C-9-06	W 564mm × D 492mm × H 50mm	W 22.205" × D 19.370" × H 1.969"
C-9-07	W 664mm × D 492mm × H 50mm	W 26.142" × D 19.370" × H 1.969"
C-9-08	W 764mm × D 492mm × H 50mm	W 30.079" × D 19.370" × H 1.969"
C-9-09	W 864mm × D 492mm × H 50mm	W 34.016" × D 19.370" × H 1.969"
C-9-10	W 964mm × D 492mm × H 50mm	W 37.953" × D 19.370" × H 1.969"



LEATHER GRID 4S 3R

3 Row Grid divided tray for accessories with 4 Series frame.
Material: Aluminum alloy and leather.

Item No.	Size (mm)	Size (in)
C-10-06	W 564mm × D 492mm × H 50mm	W 22.205" × D 19.370" × H 1.969"
C-10-07	W 664mm × D 492mm × H 50mm	W 26.142" × D 19.370" × H 1.969"
C-10-08	W 764mm × D 492mm × H 50mm	W 30.079" × D 19.370" × H 1.969"
C-10-09	W 864mm × D 492mm × H 50mm	W 34.016" × D 19.370" × H 1.969"
C-10-10	W 964mm × D 492mm × H 50mm	W 37.953" × D 19.370" × H 1.969"



LEATHER HD SHELF 4S

Leather shelf with 2 horizontal dividers in 4 Series frame.
Material: Aluminum alloy and leather.

Item No.	Size (mm)	Size (in)
C-11-06	W 564mm × D 492mm × H 50mm	W 22.205" × D 19.370" × H 1.969"
C-11-07	W 664mm × D 492mm × H 50mm	W 26.142" × D 19.370" × H 1.969"
C-11-08	W 764mm × D 492mm × H 50mm	W 30.079" × D 19.370" × H 1.969"
C-11-09	W 864mm × D 492mm × H 50mm	W 34.016" × D 19.370" × H 1.969"
C-11-10	W 964mm × D 492mm × H 50mm	W 37.953" × D 19.370" × H 1.969"



LEATHER JEWELRY 4S MODEL A

Leather lined jewelry drawer model A with 4 Series frame.
Material: Aluminum alloy and leather.

Item No.	Size (mm)	Size (in)
C-12-06	W 564mm × D 492mm × H 50mm	W 22.205" × D 19.370" × H 1.969"
C-12-07	W 664mm × D 492mm × H 50mm	W 26.142" × D 19.370" × H 1.969"
C-12-08	W 764mm × D 492mm × H 50mm	W 30.079" × D 19.370" × H 1.969"
C-12-09	W 864mm × D 492mm × H 50mm	W 34.016" × D 19.370" × H 1.969"
C-12-10	W 964mm × D 492mm × H 50mm	W 37.953" × D 19.370" × H 1.969"



LEATHER UNDERWEAR DRAWER 4S

Leather lined, divided pull out deep underwear drawer with 4 Series frame.
Material: Aluminum alloy and leather.

Item No.	Size (mm)	Size (in)
C-13-06	W 564mm × D 492mm × H 100mm	W 22.205" × D 19.370" × H 3.937"
C-13-07	W 664mm × D 492mm × H 100mm	W 26.142" × D 19.370" × H 3.937"
C-13-08	W 764mm × D 492mm × H 100mm	W 30.079" × D 19.370" × H 3.937"
C-13-09	W 864mm × D 492mm × H 100mm	W 34.016" × D 19.370" × H 3.937"
C-13-10	W 964mm × D 492mm × H 100mm	W 37.953" × D 19.370" × H 3.937"



LEATHER BIN 4S

Fully lined pull out leather deep leather bin with 4 Series frame.
Material: Aluminum alloy and leather.

Item No.	Size (mm)	Size (in)
C-14-06	W 564mm × D 492mm × H 200mm	W 22.205" × D 19.370" × H 7.874"
C-14-07	W 664mm × D 492mm × H 200mm	W 26.142" × D 19.370" × H 7.874"
C-14-08	W 764mm × D 492mm × H 200mm	W 30.079" × D 19.370" × H 7.874"
C-14-09	W 864mm × D 492mm × H 200mm	W 34.016" × D 19.370" × H 7.874"
C-14-10	W 964mm × D 492mm × H 200mm	W 37.953" × D 19.370" × H 7.874"



LEATHER JEWELRY 4S MODEL B

Leather lined jewelry drawer model B with 4 Series frame.
Material: Aluminum alloy and leather.

Item No.	Size (mm)	Size (in)
C-15-06	W 564mm × D 492mm × H 50mm	W 22.205" × D 19.370" × H 1.969"
C-15-07	W 664mm × D 492mm × H 50mm	W 26.142" × D 19.370" × H 1.969"
C-15-08	W 764mm × D 492mm × H 50mm	W 30.079" × D 19.370" × H 1.969"
C-15-09	W 864mm × D 492mm × H 50mm	W 34.016" × D 19.370" × H 1.969"
C-15-10	W 964mm × D 492mm × H 50mm	W 37.953" × D 19.370" × H 1.969"



LEATHER PULL OUT SHOE 4S

Leather pull out shoes drawer with 4 Series frame.
Material: Aluminum alloy and leather.

Item No.	Size (mm)	Size (in)
C-16-06	W 564mm × D 492mm × H 265mm	W 22.205" × D 19.370" × H 10.433"
C-16-07	W 664mm × D 492mm × H 265mm	W 26.142" × D 19.370" × H 10.433"
C-16-08	W 764mm × D 492mm × H 265mm	W 30.079" × D 19.370" × H 10.433"
C-16-09	W 864mm × D 492mm × H 265mm	W 34.016" × D 19.370" × H 10.433"
C-16-10	W 964mm × D 492mm × H 265mm	W 37.953" × D 19.370" × H 10.433"



LEATHER PULL OUT OPEN SHELF 4S

Leather pull out shelf with 4 Series frame.
Material: Aluminum alloy and leather.

Item No.	Size (mm)	Size (in)
C-19-06	W 564mm × D 492mm × H 50mm	W 22.205" × D 19.370" × H 1.969"
C-19-07	W 664mm × D 492mm × H 50mm	W 26.142" × D 19.370" × H 1.969"
C-19-08	W 764mm × D 492mm × H 50mm	W 30.079" × D 19.370" × H 1.969"
C-19-09	W 864mm × D 492mm × H 50mm	W 34.016" × D 19.370" × H 1.969"
C-19-10	W 964mm × D 492mm × H 50mm	W 37.953" × D 19.370" × H 1.969"



LEATHER JEWELRY 4S MODEL C

Leather lined jewelry drawer model C with 4 Series frame.
Material: Aluminum alloy and leather.

Item No.	Size (mm)	Size (in)
C-20-06	W 564mm × D 492mm × H 50mm	W 22.205" × D 19.370" × H 1.969"
C-20-07	W 664mm × D 492mm × H 50mm	W 26.142" × D 19.370" × H 1.969"
C-20-08	W 764mm × D 492mm × H 50mm	W 30.079" × D 19.370" × H 1.969"
C-20-09	W 864mm × D 492mm × H 50mm	W 34.016" × D 19.370" × H 1.969"
C-20-10	W 964mm × D 492mm × H 50mm	W 37.953" × D 19.370" × H 1.969"

em couro

PULL OUTS 5 SERIES

The 5 Series frame is made up of an aluminum profile with a leather-wrapped contoured aluminum strip applied to the front of the frame.

Hettich slides included.





LEATHER JEWELRY 5S

Leather jewelry drawer with 5 Series frame.
Material: Aluminum alloy and leather.

Item No.	Size (mm)	Size (in)
X-2-06	W 564mm × D 510mm × H 50mm	W 22.205" × D 20.079" × H 1.969"
X-2-07	W 664mm × D 510mm × H 50mm	W 26.142" × D 20.079" × H 1.969"
X-2-08	W 764mm × D 510mm × H 50mm	W 30.079" × D 20.079" × H 1.969"
X-2-09	W 864mm × D 510mm × H 50mm	W 34.016" × D 20.079" × H 1.969"
X-2-10	W 964mm × D 510mm × H 50mm	W 37.953" × D 20.079" × H 1.969"



LEATHER PANT RACK M 5S

Moveable rods leather pull-out pant rack with 5 Series frame.
Material: Aluminum alloy and leather.

Item No.	Size (mm)	Size (in)
X-1-06	W 564mm × D 510mm × H 50mm	W 22.205" × D 20.079" × H 1.969"
X-1-07	W 664mm × D 510mm × H 50mm	W 26.142" × D 20.079" × H 1.969"
X-1-08	W 764mm × D 510mm × H 50mm	W 30.079" × D 20.079" × H 1.969"
X-1-09	W 864mm × D 510mm × H 50mm	W 34.016" × D 20.079" × H 1.969"
X-1-10	W 964mm × D 510mm × H 50mm	W 37.953" × D 20.079" × H 1.969"



LEATHER BIN 5S

Fully lined pull out leather deep leather bin with 5 Series frame.
Material: Aluminum alloy and leather.

Item No.	Size (mm)	Size (in)
X-3-06	W 564mm × D 510mm × H 50mm	W 22.205" × D 20.079" × H 1.969"
X-3-07	W 664mm × D 510mm × H 50mm	W 26.142" × D 20.079" × H 1.969"
X-3-08	W 764mm × D 510mm × H 50mm	W 30.079" × D 20.079" × H 1.969"
X-3-09	W 864mm × D 510mm × H 50mm	W 34.016" × D 20.079" × H 1.969"
X-3-10	W 964mm × D 510mm × H 50mm	W 37.953" × D 20.079" × H 1.969"



LEATHER PULL OUT SHELF 4S

Leather pull out shelf with 5 Series frame.
Material: Aluminum alloy and leather.

Item No.	Size (mm)	Size (in)
X-4-06	W 564mm × D 510mm × H 50mm	W 22.205" × D 20.079" × H 1.969"
X-4-07	W 664mm × D 510mm × H 50mm	W 26.142" × D 20.079" × H 1.969"
X-4-08	W 764mm × D 510mm × H 50mm	W 30.079" × D 20.079" × H 1.969"
X-4-09	W 864mm × D 510mm × H 50mm	W 34.016" × D 20.079" × H 1.969"
X-4-10	W 964mm × D 510mm × H 50mm	W 37.953" × D 20.079" × H 1.969"



em couro

PULL OUTS 6 SERIES

The 6 Series frame has a carbon-steel element, with leather applications.

While heavier than aluminum, carbon steel offers stability and a solid, substantial feel. This was our first edition of our pull out trays, but still a popular choice.



LEATHER PULL-OUT SHELF 6S

Leather pull out shelf with 6 Series frame.
Material: Carbon steel and leather.

Item No.	Size (mm)	Size (in)
K-2-06	W 564mm x D 457mm x H 65mm	W 22.205" x D 17.992" x H 2.560"
K-2-08	W 764mm x D 457mm x H 65mm	W 30.079" x D 17.992" x H 2.560"
K-2-09	W 864mm x D 457mm x H 65mm	W 34.016" x D 17.992" x H 2.560"
K-2-10	W 964mm x D 457mm x H 65mm	W 37.953" x D 17.992" x H 2.560"



LEATHER PULL-OUT SHELF + JEWELRY 6S

Leather pull out shelf with 6 Series frame, including jewelry inserts.
Material: Carbon steel and leather.

Item No.	Size (mm)	Size (in)
K-2-06	W 564mm x D 457mm x H 65mm	W 22.205" x D 17.992" x H 2.560"
K-2-08	W 764mm x D 457mm x H 65mm	W 30.079" x D 17.992" x H 2.560"
K-2-09	W 864mm x D 457mm x H 65mm	W 34.016" x D 17.992" x H 2.560"
K-2-10	W 964mm x D 457mm x H 65mm	W 37.953" x D 17.992" x H 2.560"



LEATHER PULL-OUT SHELF DIVIDED 6S

Divided in 3 sections Leather pull out shelf with 6 Series frame.
Material: Carbon steel and leather.

Item No.	Size (mm)	Size (in)
K-6-06	W 564mm x D 457mm x H 65mm	W 22.205" x D 17.992" x H 2.560"
K-6-08	W 764mm x D 457mm x H 65mm	W 30.079" x D 17.992" x H 2.560"
K-6-09	W 864mm x D 457mm x H 65mm	W 34.016" x D 17.992" x H 2.560"
K-6-10	W 964mm x D 457mm x H 65mm	W 37.953" x D 17.992" x H 2.560"



LEATHER GRID 6S 3R

3 Row Grid divided tray for accessories with 6 Series frame.
Material: Carbon steel and leather.

Item No.	Size (mm)	Size (in)
K-7-06	W 564mm x D 457mm x H 65mm	W 22.205" x D 17.992" x H 2.560"
K-7-08	W 764mm x D 457mm x H 65mm	W 30.079" x D 17.992" x H 2.560"
K-7-09	W 864mm x D 457mm x H 65mm	W 34.016" x D 17.992" x H 2.560"
K-7-10	W 964mm x D 457mm x H 65mm	W 37.953" x D 17.992" x H 2.560"



LEATHER PULL-OUT SHOE 6S

Leather pull out shoes drawer with 6 Series frame.
Material: Carbon steel and leather.

Item No.	Size (mm)	Size (in)
K-1-06	W 564mm x D 457mm x H 65mm	W 22.205" x D 17.992" x H 2.560"
K-1-08	W 764mm x D 457mm x H 65mm	W 30.079" x D 17.992" x H 2.560"
K-1-09	W 864mm x D 457mm x H 65mm	W 34.016" x D 17.992" x H 2.560"
K-1-10	W 964mm x D 457mm x H 65mm	W 37.953" x D 17.992" x H 2.560"



LEATHER BIN 6S

Fully lined pull out leather deep leather bin with 6 Series frame.
Material: Carbon steel and leather.

Item No.	Size (mm)	Size (in)
K-3-06	W 564mm x D 457mm x H 65mm	W 22.205" x D 17.992" x H 2.560"
K-3-08	W 764mm x D 457mm x H 65mm	W 30.079" x D 17.992" x H 2.560"
K-3-09	W 864mm x D 457mm x H 65mm	W 34.016" x D 17.992" x H 2.560"
K-3-10	W 964mm x D 457mm x H 65mm	W 37.953" x D 17.992" x H 2.560"



LEATHER PANT RACK M 6S

Moveable rods leather pull-out pant rack with 6 Series frame.
Material: Carbon steel and leather.

Item No.	Size (mm)	Size (in)
K-8-06	W 564mm x D 457mm x H 65mm	W 22.205" x D 17.992" x H 2.560"
K-8-08	W 764mm x D 457mm x H 65mm	W 30.079" x D 17.992" x H 2.560"
K-8-09	W 864mm x D 457mm x H 65mm	W 34.016" x D 17.992" x H 2.560"
K-8-10	W 964mm x D 457mm x H 65mm	W 37.953" x D 17.992" x H 2.560"



LEATHER PANT RACK + STORAGE

Pull-out pant rack with 6 Series frame and storage.
Material: Carbon steel and leather.

Item No.	Size (mm)	Size (in)
K-4-06	W 564mm x D 457mm x H 65mm	W 22.205" x D 17.992" x H 2.560"
K-4-08	W 764mm x D 457mm x H 65mm	W 30.079" x D 17.992" x H 2.560"
K-4-09	W 864mm x D 457mm x H 65mm	W 34.016" x D 17.992" x H 2.560"
K-4-10	W 964mm x D 457mm x H 65mm	W 37.953" x D 17.992" x H 2.560"



LEATHER JEWELRY 6S MODEL A

Leather lined jewelry drawer model A with 6 Series frame.
Material: Carbon steel and leather.

Item No.	Size (mm)	Size (in)
K-14-06	W 564mm x D 457mm x H 65mm	W 22.205" x D 17.992" x H 2.560"
K-14-08	W 764mm x D 457mm x H 65mm	W 30.079" x D 17.992" x H 2.560"
K-14-09	W 864mm x D 457mm x H 65mm	W 34.016" x D 17.992" x H 2.560"
K-14-10	W 964mm x D 457mm x H 65mm	W 37.953" x D 17.992" x H 2.560"



LEATHER JEWELRY 6S MODEL B

Leather lined jewelry drawer model B with 6 Series frame.
Material: Carbon steel and leather.

Item No.	Size (mm)	Size (in)
K-10-08	W 764mm x D 457mm x H 65mm	W 30.079" x D 17.992" x H 2.560"
K-10-09	W 864mm x D 457mm x H 65mm	W 34.016" x D 17.992" x H 2.560"
K-10-10	W 964mm x D 457mm x H 65mm	W 37.953" x D 17.992" x H 2.560"



LEATHER JEWELRY 6S MODEL C

Leather lined jewelry drawer model C with 6 Series frame.
Material: Carbon steel and leather.

Item No.	Size (mm)	Size (in)
B-1-06	W 564mm x D 457mm x H 65mm	W 22.205" x D 17.992" x H 2.560"
B-1-08	W 764mm x D 457mm x H 65mm	W 30.079" x D 17.992" x H 2.560"
B-1-09	W 864mm x D 457mm x H 65mm	W 34.016" x D 17.992" x H 2.560"
B-1-10	W 964mm x D 457mm x H 65mm	W 37.953" x D 17.992" x H 2.560"



LEATHER JEWELRY 6S MODEL D

Leather lined jewelry drawer model D with 6 Series frame.
Material: Carbon steel and leather.

Item No.	Size (mm)	Size (in)
B-11-06	W 564mm x D 457mm x H 65mm	W 22.205" x D 17.992" x H 2.560"
B-11-08	W 764mm x D 457mm x H 65mm	W 30.079" x D 17.992" x H 2.560"
B-11-09	W 864mm x D 457mm x H 65mm	W 34.016" x D 17.992" x H 2.560"
B-11-10	W 964mm x D 457mm x H 65mm	W 37.953" x D 17.992" x H 2.560"



em couro

DROP IN TRAYS



LEATHER UNIVERSAL TRAY

Leather divider tray for accessories.
Material: Aluminum alloy and leather.

Item No.	Size (mm)	Size (in)
SP-1	W 155mm x D 428mm x H 50mm	W 6.102" x D 16.850" x H 1.969"



LEATHER TIE TRAY

Leather tray with 3 compartments for rolled ties.
Material: Aluminum alloy and leather.

Item No.	Size (mm)	Size (in)
SP-2	W 155mm x D 428mm x H 50mm	W 6.102" x D 16.850" x H 1.969"



LEATHER RING TRAY

Leather tray with 3 compartments, with 1 for rings.
Material: Aluminum alloy and leather.

Item No.	Size (mm)	Size (in)
SP-3	W 155mm x D 428mm x H 50mm	W 6.102" x D 16.850" x H 1.969"



LEATHER WATCH TRAY

Leather tray with 3 compartments with 4 watch pillows.
Material: Aluminum alloy and leather.

Item No.	Size (mm)	Size (in)
SP-4	W 155mm x D 428mm x H 50mm	W 6.102" x D 16.850" x H 1.969"



LEATHER ADJUSTING TRAY

Open leather tray to fill in and adjust leftover space. Add 2 on either side of a tray to increase storage space.
Material: Aluminum alloy and leather.

Item No.	Size (mm)	Size (in)
SP-11	W 155mm x D 428mm x H 50mm	W 6.102" x D 16.850" x H 1.969"



LEATHER JEWELRY BOX 2

Leather tray with 2 compartments for jewelry storage.
Material: Aluminum alloy and leather.

Item No.	Size (mm)	Size (in)
HML-0006	W 150mm x D 428mm x H 50mm	W 5.906" x D 16.850" x H 1.969"



LEATHER JEWELRY BOX 4

Leather tray with 4 compartments for jewelry storage.
Material: Aluminum alloy and leather.

Item No.	Size (mm)	Size (in)
HML-0007	W 150mm x D 428mm x H 50mm	W 5.906" x D 16.850" x H 1.969"



LEATHER JEWELRY BOX 3 + EARING

Leather tray with 3 compartments for jewelry storage with angled earring mat.
Material: Aluminum alloy and leather.

Item No.	Size (mm)	Size (in)
HML-0008	W 150mm x D 428mm x H 50mm	W 5.906" x D 16.850" x H 1.969"



LEATHER JEWELRY BOX 2 + WATCH

Leather tray with 2 compartments for jewelry storage + 4 watch pillows.
Material: Aluminum alloy and leather.

Item No.	Size (mm)	Size (in)
HML-0009	W 150mm x D 428mm x H 50mm	W 5.906" x D 16.850" x H 1.969"



LEATHER JEWELRY BOX 5

Leather tray with 5 compartments for jewelry storage.
Material: Aluminum alloy and leather.

Item No.	Size (mm)	Size (in)
HML-0010	W 150mm x D 428mm x H 50mm	W 5.906" x D 16.850" x H 1.969"



**LEATHER
JEWELRY BOX 3**

Leather tray with 3 compartments for jewelry storage.
Material: Aluminum alloy and leather.

Item No.	Size (mm)	Size (in)
HML-0011	W 150mm × D 428mm × H 50mm	W 5.906" × D 16.850" × H 1.969"



**LEATHER
JEWELRY BOX D3**

Leather tray with 3 compartments for jewelry storage, 1 split in 2.
Material: Aluminum alloy and leather.

Item No.	Size (mm)	Size (in)
HML-0012	W 150mm × D 428mm × H 50mm	W 5.906" × D 16.850" × H 1.969"



**LEATHER
JEWELRY BOX D2**

Leather tray with 2 compartments for jewelry storage, 1 larger than the other.
Material: Aluminum alloy and leather.

Item No.	Size (mm)	Size (in)
HML-0013	W 150mm × D 428mm × H 50mm	W 5.906" × D 16.850" × H 1.969"



**LEATHER JEWELRY
BOX 3 RING + EARRING**

Leather tray with 3 compartments with ring and earring storage.
Material: Aluminum alloy and leather.

Item No.	Size (mm)	Size (in)
HML-0014	W 150mm × D 428mm × H 50mm	W 5.906" × D 16.850" × H 1.969"



**EDGE
JEWELRY BOX D3**

Aluminum + Wood box with 3 compartments, 2 longer than 1.
Material: Aluminum alloy and wood.

Item No.	Size (mm)	Size (in)
SP-5	W 150mm × D 410mm × H 50mm	W 5.906" × D 16.142" × H 1.969"



**EDGE
JEWELRY BOX 3**

Aluminum + Wood box with 3 compartments.
Material: Aluminum alloy and wood.

Item No.	Size (mm)	Size (in)
SP-6	W 150mm × D 410mm × H 50mm	W 5.906" × D 16.142" × H 1.969"



**EDGE
JEWELRY BOX 3R**

Aluminum + Wood box with 3 long sections.
Material: Aluminum alloy and wood.

Item No.	Size (mm)	Size (in)
SP-7	W 300mm×D 410mm×H 50mm	W 11.811"×D 16.142"×H 1.969"



**EDGE JEWELRY
BOX RING + WATCH**

Leather tray with 2 compartments for jewelry storage + 4 watch pillows.
Material: Aluminum alloy and wood.

Item No.	Size (mm)	Size (in)
SP-8	W 300mm×D 410mm×H 50mm	W 11.811"×D 16.142"×H 1.969"



**EDGE NARROW
JEWELRY BOX 2**

Aluminum + Wood narrow box with 2 divisions.
Material: Aluminum alloy and wood.

Item No.	Size (mm)	Size (in)
SP-14	W 80mm×D 410mm×H 50mm	W 3.150"×D 16.142"×H 1.969"



**LEATHER
WATCH + RING BOX**

Leather box for 6 watches and several rings.
Material: Aluminum alloy and wood.

Item No.	Size (mm)	Size (in)
SP-19	W 250mm×D 410mm×H 50mm	W 9.843"×D 16.142"×H 1.969"



**LEATHER
JEWELRY BOX D5**

Leather jewelry box with 5 compartments, various sizes.
Material: Aluminum alloy and wood.

Item No.	Size (mm)	Size (in)
SP-20	W 250mm×D 410mm×H 50mm	W 9.843"×D 16.142"×H 1.969"



**LEATHER JEWELRY
BOX GRID 12**

Leather jewelry box with 12 compartments.
Material: Aluminum alloy and wood.

Item No.	Size (mm)	Size (in)
SP-21	W 250mm×D 410mm×H 50mm	W 9.843"×D 16.142"×H 1.969"



LEATHER JEWELRY BOX NECKLACE

Leather jewelry box for necklaces.
Material: Aluminum alloy and wood.

Item No.	Size (mm)	Size (in)
SP-22	W 150mm×D 410mm×H 50mm	W 5.910"×D 16.142"×H 1.969"



LEATHER JEWELRY BOX 3 + EARRING

Leather jewelry box with 3 compartments, 1 for earrings.
Material: Aluminum alloy and wood.

Item No.	Size (mm)	Size (in)
SP-23	W 150mm×D 410mm×H 50mm	W 5.910"×D 16.142"×H 1.969"



LEATHER JEWELRY BOX 3 + RING

Leather jewelry box with 3 compartments, 1 long for rings.
Material: Aluminum alloy and wood.

Item No.	Size (mm)	Size (in)
SP-24	W 150mm×D 410mm×H 50mm	W 5.910"×D 16.142"×H 1.969"



LEATHER JEWELRY BOX MULTI + RING

Leather jewelry box with 3 divisions and multi compartments, 1 long for rings.
Material: Aluminum alloy and wood.

Item No.	Size (mm)	Size (in)
SP-25	W 150mm×D 410mm×H 50mm	W 5.906"×D 16.142"×H 1.969"



WOOD NARROW JEWELRY BOX 3

Wood jewelry narrow box with 3 compartments.
Material: Aluminum alloy and wood.

Item No.	Size (mm)	Size (in)
SP-26	W 85mm×D 410mm×H 50mm	W 3.346"×D 16.142"×H 1.969"

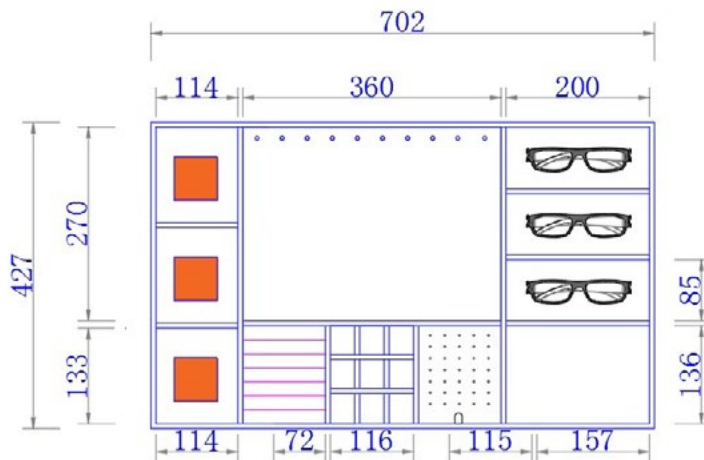
em couro

CUSTOM SIZES & CONFIGURATION TRAYS

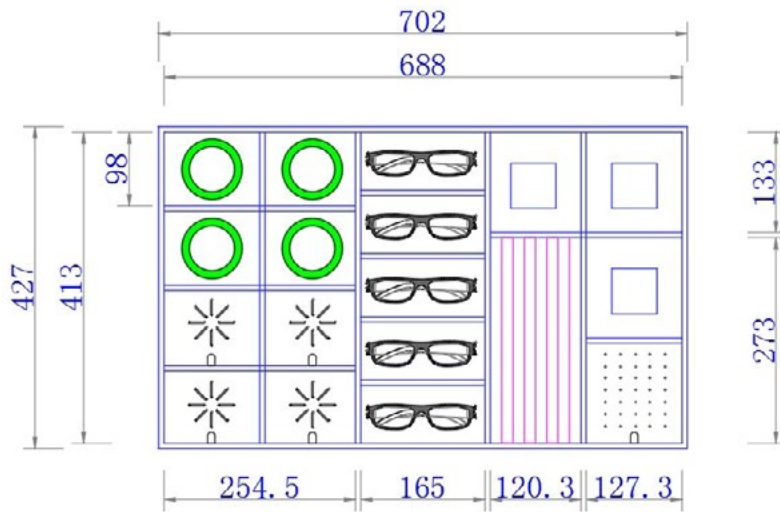
These are examples and popular configurations of custom size and custom made jewelry trays.

Use these configurations and request re-sizing adjustments, or design your own and ask us for a quote.

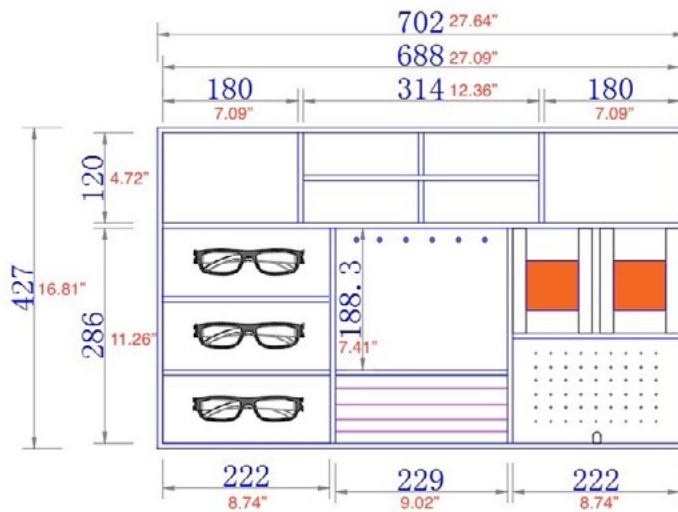
TYPE A



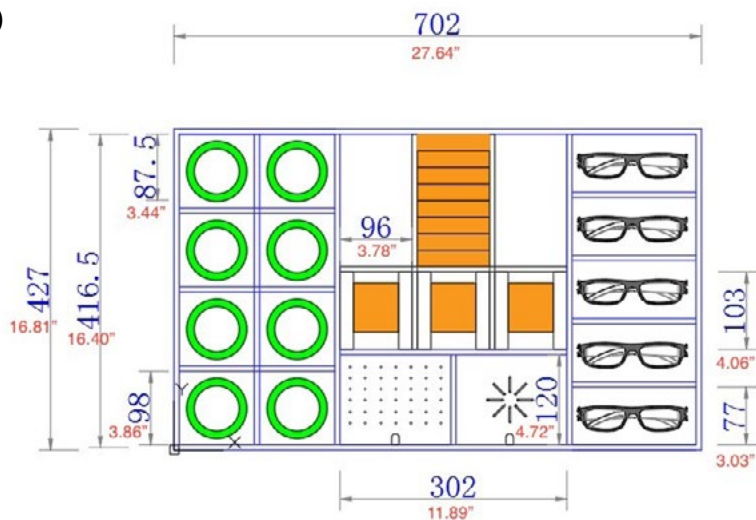
TYPE B



TYPE C



TYPE D





em couro

SPECIALTY STORAGE



JEWELRY BOX A

Flannelette jewelry box.
Material: Wood and flannelette.

Item No.	Size (mm)	Size (in)
SP-9	W 363mm x D 199mm x H 25mm	W 14.291" x D 7.835" x H 0.984"



JEWELRY BOX B

Material: Wood.

Item No.	Size (mm)	Size (in)
BL-11-06	W 400mm x D 440mm x H 60mm	W 15.748" x D 17.323" x H 2.362"
BL-11-08	W 600mm x D 440mm x H 60mm	W 23.622" x D 17.323" x H 2.362"
BL-11-09	W 700mm x D 440mm x H 60mm	W 27.560" x D 17.323" x H 2.362"
BL-11-10	W 800mm x D 440mm x H 60mm	W 31.496" x D 17.323" x H 2.362"



JEWELRY BOX C

Material: Wood.

Item No.	Size (mm)	Size (in)
BL-12-06	W 400mm x D 440mm x H 60mm	W 15.748" x D 17.323" x H 2.362"
BL-12-08	W 600mm x D 440mm x H 60mm	W 23.622" x D 17.323" x H 2.362"
BL-12-09	W 700mm x D 440mm x H 60mm	W 27.560" x D 17.323" x H 2.362"
BL-12-10	W 800mm x D 440mm x H 60mm	W 31.496" x D 17.323" x H 2.362"



ULTRA NARROW TREASURE BOX

Super Narrow 3 compartments box, folded & stitched, B series colors.
Material: Aluminum and leather.

Item No.	Size (mm)	Size (in)
SN-3	W 825mm × D 108mm × H 50mm	W 32.480" × D 4.252" × H 1.969"



STORAGE BOX W/ LID REGULAR MOQ 2

Leather storage box w/ lid, B series colors.
Material: Wood and leather.

Item No.	Size (mm)	Size (in)
SN-7	W 270mm × D 300mm × H 320mm	W 10.630" × D 11.811" × H 12.598"



LEATHER STORAGE BOX

Leather storage box no lid, folded & stitched, B series colors.
Material: Leather.

Item No.	Size (mm)	Size (in)
SN-1	W 300mm × D 400mm × H 200mm	W 11.811" × D 15.748" × H 7.874"



JEWELRY DROP IN BOX

Leather lined open box. B series colors.
Material: Aluminum and leather.

Item No.	Size (mm)	Size (in)
Y-9	W 320mm × D 350mm × H 75mm	W 12.598" × D 13.780" × H 2.953"



OPEN BOX SCOOPED

Open storage box with U-shape scooped front in eco-leather, B series colors.
Material: 3mm MDF and eco-leather.

Item No.	Size (mm)	Size (in)
CT-4	W 435mm × D 250mm × H 145mm	W 17.126" × D 9.843" × H 5.709"



OPEN BOX KNOB

Leather lined open box. B series colors, with knob.
Material: Aluminum, wood and leather.

Item No.	Size (mm)	Size (in)
CT-1	W 270mm × D 300mm × H 120mm	W 10.630" × D 11.811" × H 4.724"
CT-2	W 270mm × D 300mm × H 120mm	W 10.630" × D 11.811" × H 4.724"
CT-3	W 230mm × D 300mm × H 120mm	W 9.055" × D 11.811" × H 4.724"



STORAGE HOLSTER
MOQ 20

Folded and stitched leather sheath envelope. B series colors.
 Material: Leather.

Item No.	Size (mm)	Size (in)
SN-6	W 267mm x D 280mm x H 70mm	W 10.512" x D 11.024" x H 2.756"



BOX & GRID

Grid compartments box, B series colors.
 Material: Aluminum and leather.

Item No.	Size (mm)	Size (in)
SN-2	W 825mm x D 414mm x H 50mm	W 32.480" x D 16.300" x H 1.969"



STORAGE BOX W/ LID
MOQ 2

5mm board wrapped in eco-leather B series colors.
 Material: 5mm MDF and eco-leather.

Item No.	Size (mm)	Size (in)
SN-9	W 350mm x D 300mm x H 200mm	W 13.780" x D 16.142" x H 1.969"

WATCH WINDER



LOCKABLE LEATHER WATCH WINDER

Leather watch winder box for 4-6 watches with biometric lock. Programs up to 10 different fingers for unlocking. LED lighting around each watch. Plug & Play: requires 2 plugs, one for winders and one for LED lights.
Material: Particle board and leather.

Item No.	Size (mm)	Size (in)
KY-4-06	W 560mm x D 350mm x H 230mm	W 22.047" x D 13.780" x H 9.055"
KY-4-07	W 660mm x D 350mm x H 230mm	W 25.984" x D 13.780" x H 9.055"
KY-4-08	W 760mm x D 350mm x H 230mm	W 29.921" x D 13.780" x H 9.055"
KY-4-09	W 860mm x D 350mm x H 230mm	W 33.858" x D 13.780" x H 9.055"
KY-4-10	W 960mm x D 350mm x H 230mm	W 37.795" x D 13.780" x H 9.055"



LEATHER BIOMETRIC OR COMBINATION SAFE

Leather lined safe box with a biometric or combination locked drawer.
Material: Aluminum alloy and leather.

Item No.	Size (mm)	Size (in)
528	W 528mm x D 480mm x H 350mm	W 20.787" x D 18.898" x H 13.780"
600	W 612mm x D 480mm x H 350mm	W 24.095" x D 18.898" x H 13.780"
700	W 712mm x D 480mm x H 350mm	W 28.032" x D 18.898" x H 13.780"
800	W 812mm x D 480mm x H 350mm	W 31.969" x D 18.898" x H 13.780"
900	W 912mm x D 480mm x H 350mm	W 35.901" x D 18.898" x H 13.780"
1000	W 1012mm x D 480mm x H 350mm	W 39.843" x D 18.898" x H 13.780"



LOCKABLE LEATHER WATCH WINDER WITH BOX DRAWERS

Our lockable leather watch winder box combined with box drawers.
Material: Particle board and leather.

Custom sizes



GLASSES STORAGE BOX

Storage for 6 pairs of glasses on rods, with 4 box drawers on the sides.
Material: 3mm MDF and eco-leather.

Custom sizes

em couro

HANGERS



CLOTHING POLE



Material: Aluminum and leather.

Item No.	Size
K-5	Custom

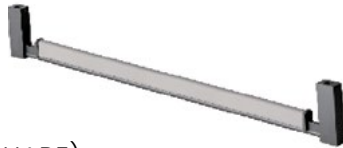
TOP MOUNTED CLOTHES POLE



Material: Aluminum plate.

Item No.	Size (mm)	Size (in)
KY-3-06	L 500mm	L 19.685"
KY-3-07	L 600mm	L 23.622"
KY-3-08	L 700mm	L 27.560"
KY-3-09	L 800mm	L 31.496"
KY-3-10	L 900mm	L 35.433"
KY-3-12	L 1100mm	L 43.307"

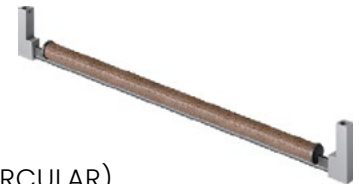
TOP MOUNTED CLOTHES POLE (SQUARE)



Material: Aluminum plate.

Item No.	Size (mm)	Size (in)
KY-5-06	L 500mm	L 19.685"
KY-5-07	L 600mm	L 23.622"
KY-5-08	L 700mm	L 27.560"
KY-5-09	L 800mm	L 31.496"
KY-5-10	L 900mm	L 35.433"
KY-5-12	L 1100mm	L 43.307"

TOP MOUNTED CLOTHES POLE (CIRCULAR)



Material: Aluminum plate.

Item No.	Size (mm)	Size (in)
KY-6-06	L 500mm	L 19.685"
KY-6-07	L 600mm	L 23.622"
KY-6-08	L 700mm	L 27.560"
KY-6-09	L 800mm	L 31.496"
KY-6-10	L 900mm	L 35.433"
KY-6-12	L 1100mm	L 43.307"

TROUSERS HANGER MOQ-50

Leather wrapped hanger with clips for trousers.
Material: Solid wood and leather.



Item No.	Size (capacity)
GY-8	Single

TROUSERS HANGER MOQ-100

Leather wrapped hanger with clips for trousers.
Material: Solid wood and leather.



Item No.	Size (capacity)
GY-8A	Single



**HANGER
MAN MOQ-50**

Leather wrapped hanger for jackets and shirts.
Material: Solid wood and leather.

Item No.	Size (capacity)
GY-6	Single



**HANGER
WOMAN MOQ-50**

Leather wrapped hanger for jackets and shirts.
Material: Solid wood and leather.

Item No.	Size (capacity)
GY-7	Single



SCARF HOLDER

Leather wrapped hanger for jackets and shirts.
Material: Solid wood and leather.

Item No.	Outer Ring Size (cm)	Outer Ring Size (in)
GY-11	14cm	L 5.512"
GY-11	18cm	L 7.087"



TROUSER HOOK

Leather wrapped hanger for jackets and shirts.
Material: Solid wood and leather.

Item No.	Size (capacity)
GY-9	Single



SCARF HOLDER

Leather wrapped hanger for jackets and shirts.
Material: Solid wood and leather.

Item No.	Size (capacity)
GY-9A	Single

HANGING SOLUTIONS



PULL DOWN ROD DOUBLE ADJ WIDTH

Leather lined rod that pulls down mounted on two vertical sides.
Material: Aluminum alloy and leather.

Item No.	Size (mm)	Size (in)
A-2-07 (700-900)	W 645-920mm × H 850mm	W 25.394-36.221" × H 33.465"
A-2-10 (1000-1200)	W 890-1250mm × H 850mm	W 35.039-49.213" × H 33.465"



PULL DOWN ROD SINGLE

Leather lined rod that pulls down mounted on the back of the wardrobe.
Material: Aluminum alloy and leather.

Item No.	Size (mm)	Size (in)
A-3	W 144mm × H 832mm	W 5.669" × H 32.756"



PULL OUT PANT RACK SINGLE

Leather handle pull out pant rack single row.
Material: Aluminum alloy and leather.

Item No.	Size (mm)	Size (in)
A-4	W 387mm × D 464mm × H 238mm	W 15.236" × D 18.268" × H 9.370"



PULL OUT PANT RACK DOUBLE

Leather handle pull out pant rack double row.
Material: Aluminum alloy and leather.

Item No.	Size (mm)	Size (in)
A-5	W 641mm × D 464mm × H 238mm	W 25.236" × D 18.268" × H 9.370"



PULL OUT TOP MOUNTED ROD

Leather handle and rod pull out closet rod.
Material: Aluminum alloy and leather.

Item No.	Size (mm)	Size (in)
A-6	W 60mm × D 464mm × H 238mm	W 2.362" × D 18.268" × H 9.370"



360-ROTATING SHOE RACK

Adjustable Height 360 degree rotation shoe rack with leather shelves and aluminum structure.
Material: Aluminum alloy and leather.

Item No.	Size (mm)	Size (in)
F-10-04A	W 730mm × D 350mm × H 790-1070mm	W 28.74" × D 13.78" × H 31.102-42.126"
F-10-06A	W 730mm × D 350mm × H 1070-1350mm	W 28.74" × D 13.78" × H 42.126-53.150"
F-10-08A	W 730mm × D 350mm × H 1350-1630mm	W 28.74" × D 13.78" × H 53.150-64.173"
F-10-10A	W 730mm × D 350mm × H 1630-1910mm	W 28.74" × D 13.78" × H 64.173-75.197"
F-10-12A	W 730mm × D 350mm × H 1910-2185mm	W 28.74" × D 13.78" × H 75.197-86.024"



360-ROTATING CLOTHING RACK

Adjustable Height 360 degree rotating clothing rack, with 3 layers: bottom shelf, pant rack, short hanging on top.
Foam hangers are grey or brown, bottom tray is customizable color.
Material: Aluminum alloy and leather.

Item No.	Size (mm)	Size (in)
F-11-06A	W 730mm × H 1900-2100mm	W 28.740" × H 74.803-82.677"



SCARF POLE

Walnut pole with scarf loops
Material: Aluminum alloy and walnut.

Item No.	Size (mm)	Size (in)
X-5	W 20mm × D 135mm × H 980mm	W 0.787" × D 5.315" × H 38.583"



CLOTHING POLE

Walnut pole with hook to grab clothes up high.
Material: Aluminum alloy and walnut.

Item No.	Size (mm)	Size (in)
X-6	W 20mm × D 65mm × H 980mm	W 0.787" × D 2.560" × H 38.583"

em couro

LEATHER PADS



SINGLE SIDED SOFT LEATHER PAD

Leather liner for drawers for drawers or shelves, one side finished.
Material: Leather.

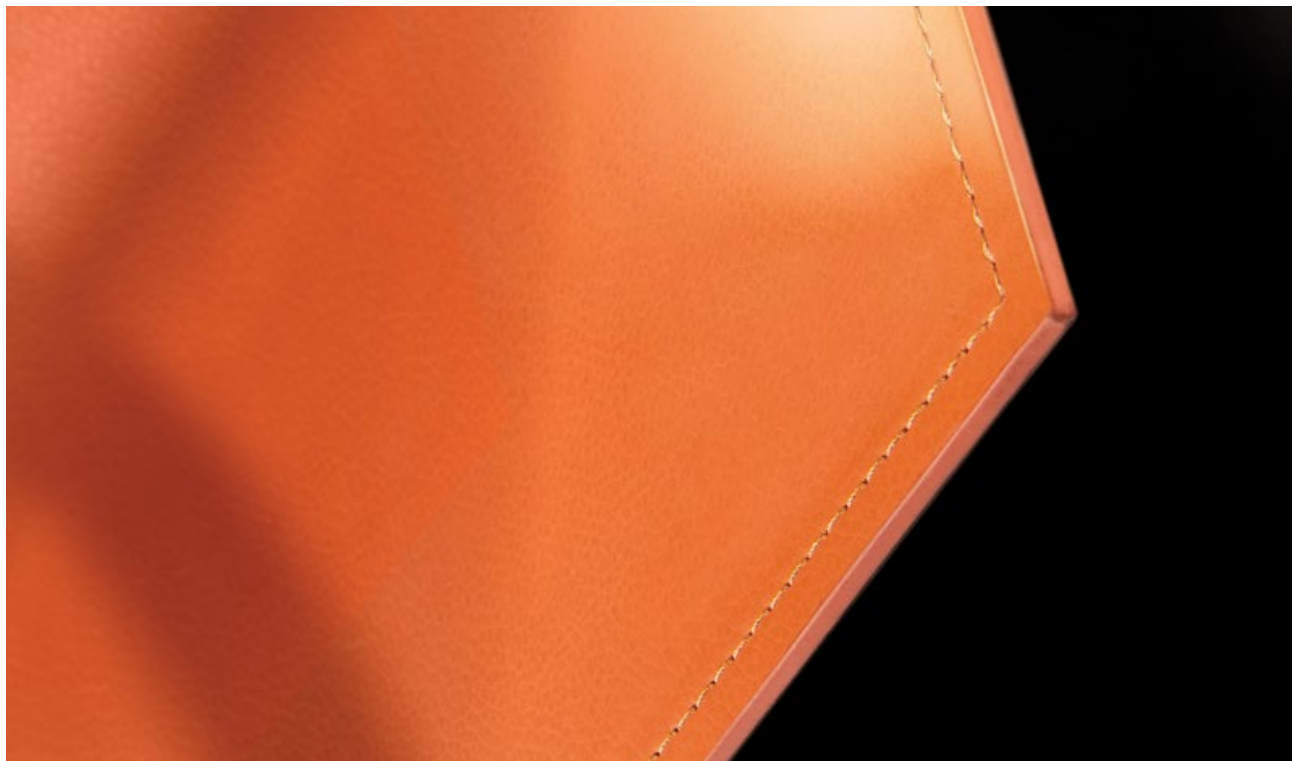
Item No.	Size (mm)	Size (in)
C-1	< W 1000mm × D 1500mm	< W 39.370" × D 59.055"



DOUBLE SIDED SOFT LEATHER PAD

Leather liner for drawers for drawers or shelves, both sides finished.
Material: Leather.

Item No.	Size (mm)	Size (in)
C-6	< W 1000mm × D 1500mm	< W 39.370" × D 59.055"





DRAWER COMPARTMENT

Use with any of the series frames instead of inserts.
Material: Aluminum plate and leather.

Item No.	Size (mm)	Size (in)
C-4	< W 1000mm × D 1000mm	< W 39.370" × D 39.370"



RIGID LEATHER PAD FOR DESK OR SHELF

Stitched borders.
Material: Aluminum plate and leather.

Item No.	Size (mm)	Size (in)
C-7	< W 1000mm × D 1000mm	< W 39.370" × D 39.370"



SOFT LEATHER PAD WITH BACKBOARD

Vertical application.
Material: Leather.

Item No.	Size (mm)	Size (in)
C-1-B	< W 1000mm × D 1500mm	< W 39.370" × D 59.055"



WALL OR CABINET DOOR MOUNTED TRAY

Material: Aluminum and EVC.

Item No.	Size (mm)	Size (in)
C-9-06	600mm	23.622"
C-9-09	900mm	35.433"
C-9-12	1200mm	47.244"
C-9-15	1500mm	59.055"



PLASTIC WATERSTOP MAT FOR CABINETS

Bottom sink cabinets.
Material: Plastic.

Item No.	Size (mm)	Size (in)
	W 550mm × D 2000mm	W 21.654" × D 78.740"

em couro

DRAWER FRONTS & DOOR PANELS



RAISED PANEL DOOR

Raised panel door with stitched edges, max height is 93.5".
Leather colors available: A + B + BZ Series.

Item No.	Material	Banding
BC-2	Marine Grade Board	Leather / aluminum edge sealing

FLAT SLAB DOOR & DRAWER FRONT

Flat slab panel door with stitched edges, max height is 93.5".
Leather colors available: A + B + BZ Series.

Item No.	Material	Banding
CB-1	Marine Grade Board	Leather / aluminum edge sealing



#21
Handle



#21
Handle



#22
Handle



#22
Handle



#24
Handle



#25
Handle



#26
Handle



#27
Handle



#28
Handle



#29
Handle



#30
Handle



#31
Handle

DRAWER PANEL

Item No.	Material	Size	Color
CM-1	Particle Board	Custom sizing	24 available colors (see color cards on pages 51-52)
CM-2	Particle Board	Custom sizing	24 available colors (see color cards on pages 51-52)
CM-3	Particle Board	Custom sizing	24 available colors (see color cards on pages 51-52)

em couro

COLOR CARDS



A SERIES
LEATHER COLORS - FOR DOORS ONLY



Color A-1



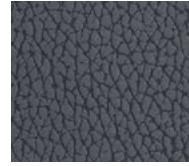
Color A-2



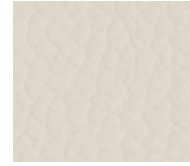
Color A-3



Color A-4



Color A-5



Color A-6



Color A-7



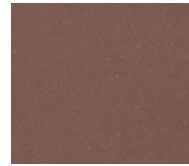
Color A-8



Color A-9



Color A-10



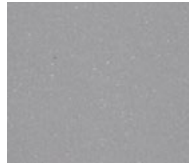
Color A-11



Color A-12



Color A-13



Color A-14

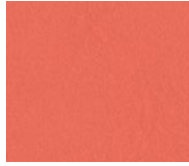


B SERIES

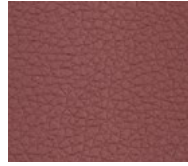
LEATHER COLORS – SOFT LEATHERS FOR INSERTS, BOXES & LEATHER TRAYS



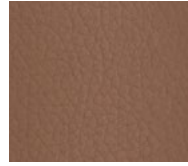
Color B-0



Color B-1



Color B-2



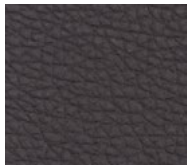
Color B-3



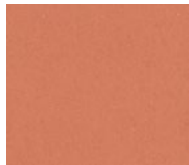
Color B-6



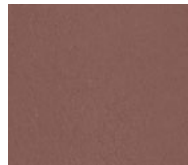
Color B-7



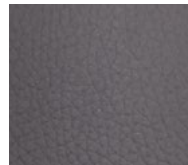
Color B-8



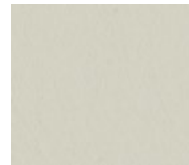
Color B-9



Color B-10



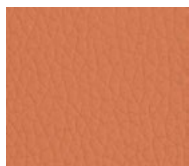
Color B-11



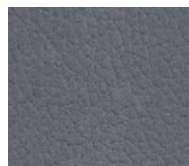
Color B-12



Color B-13



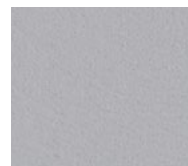
Color B-14



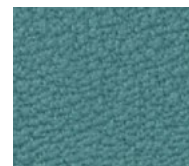
Color B-15



Color B-16



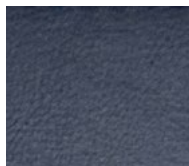
Color B-17



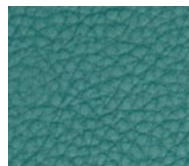
Color B-18



Color B-19



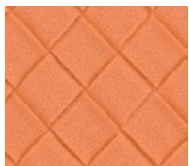
Color B-25



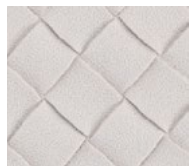
Color B-26

BZ SERIES

LEATHER COLORS – SOFT LEATHERS FOR INSERTS, BOXES & LEATHER TRAYS



Color BZ-1



Color BZ-2



Color BZ-3



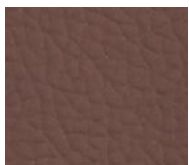
Color BZ-4



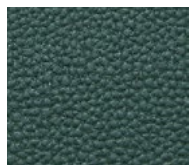
Color BZ-5



Color BZ-14



Color BZ-15

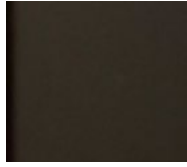


Color BZ-17

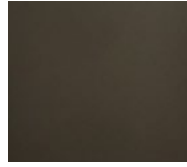
C SERIES METAL COLORS – FOR FRAMES



Color C-1



Color C-3



Color C-5

C-1 is a warm olive/clay brown, no shimmer
C-3 is a neutral dark brown, no shimmer
C-5 is a cool charcoal grey with a slight shimmer
and our standard color

*Color C-5 is the standard finish with no minimum order quantity.
Colors C-1 and C-3 have a minimum order quantity of 50 pieces for any frame or metal parts.*



WHAT DOES SGS CERTIFICATION MEAN?

SGS certification for leather ensures that the product meets these criteria:

Chemical Compliance:

- Testing for harmful substances like heavy metals, formaldehyde, and other restricted chemicals.
- Ensuring compliance with regulations such as REACH (Registration, Evaluation, Authorization, and Restriction of Chemicals) in Europe or CPSIA (Consumer Product Safety Improvement Act) in the U.S.

Durability and Performance:

- Assessing properties such as tensile strength, tear resistance, abrasion resistance, and colorfastness (resistance to fading).

Environmental Standards:

- Verifying that the leather production process adheres to eco-friendly and sustainable practices, such as water and energy conservation or proper waste management.

Safety for Human Use:

- Ensuring the leather is safe for use in consumer products.



OFFICIAL DISTRIBUTOR:

CASA BOSSANOVA

bespoke kitchens & closets

CALL: 778-327-6865

EMAIL: HELLO@CASABOSSANOVA.CA

LABH

LIKE A BOSSANOVA HOME

CALL: 604-968-9922

EMAIL: INFO@LIKEABOSSANOVAHOME.COM

LIKEABOSSANOVAHOME.COM